

JIPS ANNUAL REPORT 2022

We are pleased to present the JIPS Annual Report for 2022. Discover how JIPS is making a difference in the lives of internally displaced persons (IDPs) and other communities affected by displacement, and the critical role that jointly generated data plays in finding lasting solutions for them. Explore our work in Mexico, Sudan, Burundi, Somalia, and the Philippines, where the collaborative data processes we facilitated have brought about positive changes. And get a flavour of what lays ahead for JIPS, dedicated to a future where no IDP is left behind.





Lagos, Niger. January 2023. © JIPS | Mirjam Kuschnitzki

ACKNOWLEDGEMENT

REQUIRED CITATION

JIPS (2023). JIPS Annual Report 2022. Transforming Data Into Action for Solutions to Displacement.

© **All rights reserved.** The copyright for this material lies with JIPS. It may be reproduced for educational purposes (including training, research, and programme activities) and elements of this report may be quoted in other publications, provided JIPS is acknowledged as per the above-mentioned required citation.

The annual report of the Joint Internal Displacement Profiling Service (JIPS) has been developed by Wilhelmina Welsch in close collaboration with Corina Demottaz for the narrative and design. Thanks also to Julia Litzkow for proofreading and to [Crimson Studio](#) for their design support.

Beyond the current publication, appreciation is extended to JIPS' Executive Committee members for their strategic guidance, commitment, and knowledge, and in particular DRC and UNHCR for co-hosting JIPS and facilitating country support missions; the JIPS Advisory Group for their strategic advice and foresight; and all JIPS team members for their quality contributions, deep engagement, and expertise throughout the year. Appreciation is also extended to our donors who have been making our work possible in 2022 and beyond, including the U.S. State Department's Bureau of Population, Refugees and Migration (PRM) and USAID's Bureau for Humanitarian Assistance (BHA); the Danish International Development Agency (DANIDA); the Ministry of Foreign Affairs of Norway (NMFA); and the European Commission through its Directorate-General for International Partnerships (DG-INTPA) and for European Civil Protection and Humanitarian Aid Operations (DG-ECHO).

August 2023

ACKNOWLEDGEMENT	2
FOREWORD	4
INTRODUCTION	5
2022 IN FOCUS	8
TOP MOMENTS AHEAD IN 2023	9
PARTNERSHIPS AND FUNDING	10
NATIONALLY OWNED EVIDENCE ON INTERNAL DISPLACEMENT	11
COLLECTIVE AND RESPONSIBLE EFFORTS ON DISPLACEMENT DATA AT THE COUNTRY LEVEL	16
INCLUSIVE SOLUTIONS DATA THAT CONSIDERS PEOPLE AND PLACES	22
EFFECTIVE USE OF DISPLACEMENT DATA IN POLICIES AND PROGRAMMES	28
JIPS' SUPPORT REQUEST PROCESS	31

FOREWORD

I am delighted to see the detailed outcomes of JIPS' work through 2022 shared in this Annual Report, a first for JIPS. As a long-standing member of the JIPS Executive Committee since its inception in 2009, I commend JIPS on their strong engagement with country-level partners, and their leadership in building up the evidence-base and the technical capacity for collaborative and inclusive data processes. It is through these efforts that JIPS is contributing to lasting positive changes in the lives of the people directly affected by internal displacement.

The strong forward momentum created by the UN Secretary-General's Action Agenda brings renewed visibility to internal displacement around the world. Ensuring or reinstating IDPs' human rights is part and parcel of durable solutions, and there are no Solutions without human rights, as outlined in global standards, including the Guiding Principles and the IASC Framework on Durable Solutions for IDPs. JIPS has been playing a critical role in operationalizing global standards on durable solutions that has direct implications not only on what type of data is needed but also how this evidence is generated. JIPS has demonstrated important leadership in making its approach truly inclusive – taking community engagement seriously by meaningfully engaging IDPs from the moment that data on their situations is being collected and analyzed. This enhances agency over the data and solutions.

The internal displacement landscape has significantly evolved over the past decade and today has become more complex, with more data being collected, and more actors working on the topic. Today more than ever, we need a “glue” between those multiple actors, someone who can connect the (data) dots at all levels, bringing the different actors together – across disciplines, sectors, contexts, institutional agendas. Strongly anchored in an interagency set-up that already includes humanitarian and development actors, JIPS by its very nature brokers collaboration at the humanitarian-development-peace nexus. It has professionalized the collaborative approach to data processes in internal displacement situations, enabling the Service in unique ways to foster coherent approaches in support of IDPs.

The impact stories shared in this Annual Report showcase the transformative power of linking agreed-upon evidence with policy. JIPS has built capacity for collaborative and inclusive data processes, informed by its sound experience and good practices acquired from providing support to more than 50 countries, and anchored in global standards that JIPS helps translate to each country context.

Looking ahead, I am excited about the solid foundation that has been laid for JIPS' new strategy 2024-2030 to be developed jointly in 2023. I look forward to continuing our work together, in partnership with governments, intergovernmental and international bodies, and civil society actors, to ensure that the human rights of internally displaced persons are respected, protected, and fulfilled.

*– Paula Gaviria Betancur,
Special Rapporteur on the human rights of internally displaced persons*

INTRODUCTION

Since JIPS' inception over a decade ago, the displacement data ecosystem has evolved tremendously – from one that almost completely lacked baseline data on internally displaced people (IDPs) to one that is increasingly data rich. Despite the significant scale-up of the production of high-quality data, this has not directly translated into a scale-up of joint responses to internal displacement. The continuously increasing numbers of IDPs, many of whom remain in displacement for years or decades, illustrate the need for **longer-term, multidisciplinary efforts at the systemic level, going beyond crisis mode.**

This is also strongly emphasized by the United Nations Secretary-General (UNSG) in his [Action Agenda on Internal Displacement](#), launched in June 2022. It brings strong focus to accelerating efforts on data for durable solutions to internal displacement and for concerted action across the humanitarian, development, and peace (HDP) nexus. However, while the need to better collaborate is highlighted across all domains, it remains a question: How do we do it in practice? What is the methodology for working together? And how do we ensure that the data we generate effectively links to action and positive outcomes for IDPs?

With 14+ years of experience in catalyzing cross-cutting systemic change for IDPs, **JIPS has proposed a fit-for-purpose model and delivered proof of concept of the unique value that multi-stakeholder approaches offer to advance towards evidence-based Solutions to displacement.** Where there is investment in a multi-stakeholder data process, it pays off in the longer term and generates political will and momentum for Solutions, which outlive the individual data collection exercises. JIPS has professionalized collaboration through focus on distinct skills to foster and sustain

vertical and horizontal cohesion of different stakeholders around data processes, bringing national and subnational government entities together with UN agencies, INGOs, national and local civil society organizations, as well as displacement-affected communities. **This report will highlight how this has been achieved in 2022, concretely including through our country support, and what is next for JIPS in 2023.**

“The Joint Internal Displacement Profiling Service (JIPS) is a **key partner that my mandate can rely on** to support Solutions pathways through inclusive and collaborative processes. As an interagency service, JIPS can **play a central role** in helping countries advance Solutions processes across the humanitarian, development, and peace nexus, in support of the UNSG's Action Agenda.”

– Robert Piper, UNSG Special Adviser on Solutions to Internal Displacement

More than the sum of their parts, inclusive data processes can catalyze national leadership and ownership while also supporting informed responses to displacement and building **trust and accountability not only in the data but in people and processes.** They set the basis for **evidence-based, locally owned, and community-based solutions, plans and strategies.** They also help strengthen the linkages between fast-track humanitarian response, recovery actions, and development solutions, by informing innovative humanitarian-development programming to reduce displacement-induced inequalities and address root causes of displacement. They further support governments' efforts to **advance towards the Sustainable Development Goals (SDGs) and enable development pathways to Solutions that ensure no one is left behind** and social cohesion is strengthened.

– *Wilhelmina Welsch*
Coordinator, Joint Internal Displacement Profiling Service

JIPS

WHO WE ARE

JIPS brings governments, international and local actors, and displacement-affected communities together to jointly generate and use evidence that supports durable solutions to internal displacement situations. By doing so, JIPS helps internally displaced people overcome vulnerabilities linked to their displacement and regain the full enjoyment of their human rights.

Expanding **on more than a decade of experience made in supporting multi-stakeholder data processes in over 50 contexts**, JIPS uses an inclusive approach that engages different government bodies and actors of society across fields of competence and the national-local levels (whole-of-government, whole-of-society). JIPS also emphasizes capacity development with in-country actors to enable quality data that is jointly owned and locally anchored, complementary to what exists in a given context, underpinned by international standards, and effectively used for a positive change in the lives of internally displaced persons.



A TECHNICAL EXPERT

JIPS has a unique combination of Collaborative Leadership skills, expertise on relevant global standards, and technical know-how on how to jointly design, collect, analyze, and use data on displacement situations.



A NEUTRAL BROKER

An interagency service working at the humanitarian, development, and peace (HDP) nexus – by design, free from political, operational, and sectoral agendas.

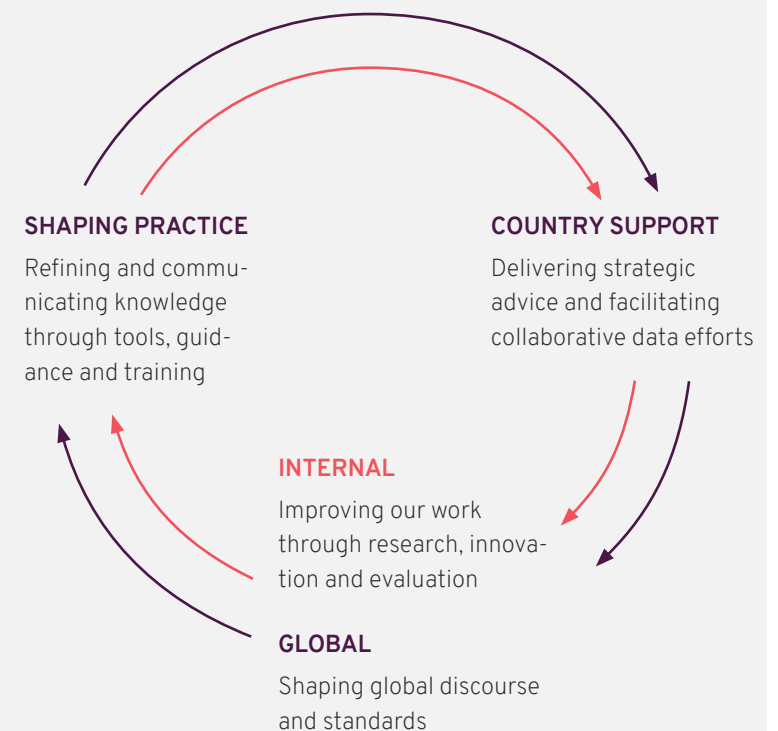


A SERVICE

JIPS puts its technical expertise and neutral identity in the service of the broader community – government entities, UN, NGOs, affected communities, and others – working to support durable solutions for internally displaced persons (IDPs).

FIGURE 1.

JIPS work cycle, feeding from the field to the global level and back



HOW WE WORK



COLLABORATION SUPPORT

For durable solutions at the country levels

Supporting individual aspects of the data value chain (e.g. information landscape mapping, operationalization/measuring progress towards Solutions strategies on internal displacement, implementation of the International Recommendations on IDP Statistics);

Supporting fully-fledged collaborative data processes, such as profiling (incl. establish a collaborative platform, design fit-for-purpose tools, contextualize global standards, build capacities, promote inclusive approaches, etc.).

Facilitating dialogue between stakeholders, including support to establish/enhance inclusive coordination mechanisms such as working groups on durable solutions or migration and forced displacement.



CAPACITY SUPPORT

At the country, regional, and global levels

Hands-on tools and tailored training on global standards and how to put them to use in a displacement context (incl. on durable solutions, IDP statistics, data responsibility);

Collaborative Leadership Programme, to build partners' process, collaboration, and technical capacities required to champion joint data and analysis processes;

Injecting **specialized durable solutions capacity** into in-country coordination structures, incl. through training and the deployment of experts to Resident/Humanitarian Coordination Offices and national Durable Solutions Working Groups.



SHAPING GLOBAL POLICIES AND STANDARDS

And peer learning

Strategic communications and issue advocacy to feed into global initiatives and policy discussions on displacement;

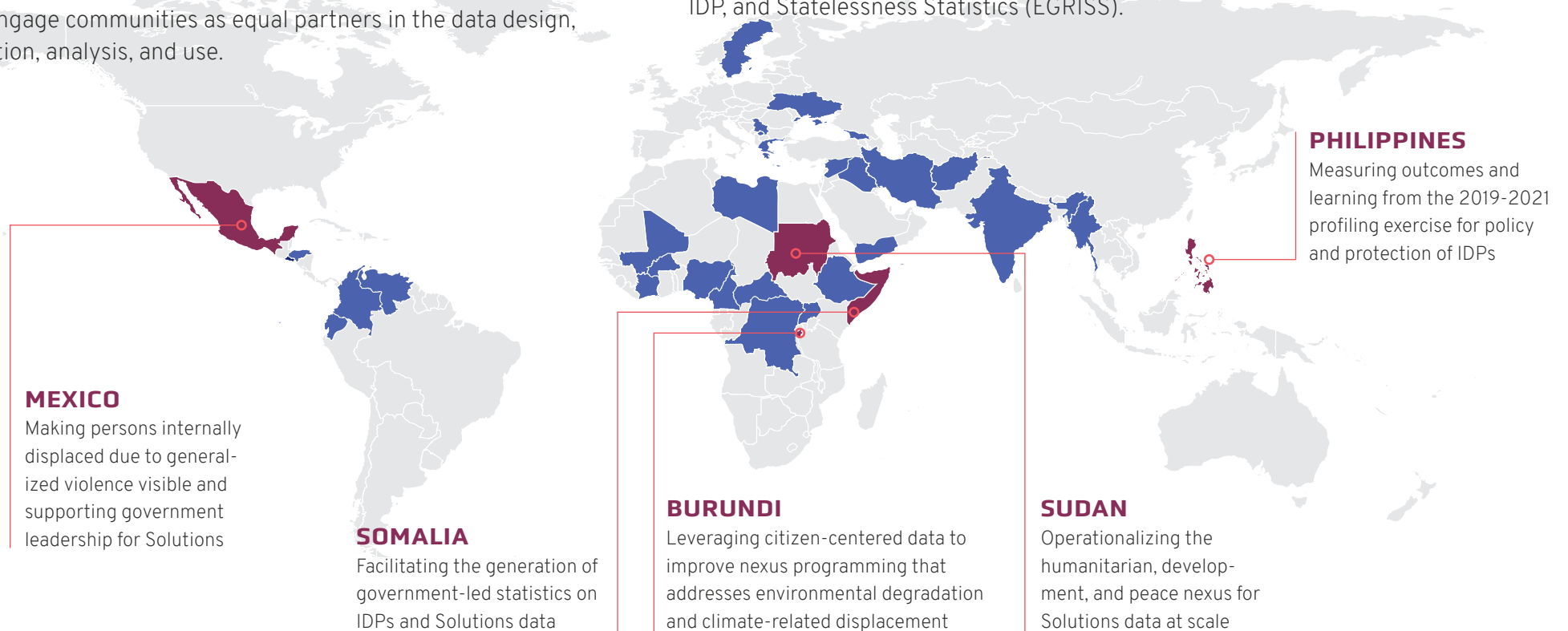
Sharing impact stories, case studies, and lessons learned to inspire good practices and enhance global knowledge on evidence-based decision making in displacement contexts.

2022 IN FOCUS

Over the last year, JIPS has made significant progress on its [2021-2023 Strategy](#), achieving tangible long-term impact in countries we supported: Mexico, Sudan, Burundi, Somalia, and the Philippines.

These exercises – and others JIPS has supported in over 50 contexts since its inception in 2009 – demonstrate the centrality of collaborative data processes to achieving the key shifts called for by the UNSG in his Action Agenda on internal displacement: political will and national ownership of data on Forced Displacement; pathways in data processes that enable collective and responsible humanitarian, development and peace results; and whole-of-society approaches that engage communities as equal partners in the data design, collection, analysis, and use.

2022 also held many other exciting highlights – such as JIPS’ annual donor-partner event in June, co-hosted by the Permanent Mission of Norway to the UN in Geneva and titled [Delivering on the UNSG’s upcoming Action Agenda on Internal Displacement: Key Shifts for Data](#). Mobilizing over 80 participants and high-level speakers from the UN, governments, and civil society, the event produced [six key takeaways](#) for the implementation of the Action Agenda. JIPS also successfully kicked off its new [Collaborative Leadership Programme](#) (CLP) (see spotlight story), and led the [technical support to Somalia for the implementation of the International Recommendations on IDP Statistics](#) (IRIS) – the first-ever fully-fledged country support project of the Expert Group on Refugee, IDP, and Statelessness Statistics (EGRIS).



TOP MOMENTS AHEAD IN 2023

In 2023, supporting countries across the globe to achieve progress towards durable solutions for internal displacement, anchored in shared evidence and inclusive processes, remains front and center of all of JIPS' efforts.

To meet the increasing demand from country partners, JIPS is growing its support capacity, namely through enhanced regional and in-country presence, in partnership with established and new donor partners as well as its Executive Committee. Other things JIPS is looking forward to:

- **Over 7 support requests in the pipeline:** This requires growing JIPS' capacity at the regional and country levels.
- **A new strategy for 2024-2030:** A new 6-year strategy is underway to expand on key successes from [JIPS' 2021-2023 Strategy](#) and articulate priorities and the ways JIPS will respond to key changes, stakeholders' needs, and opportunities ahead. It will be a co-creative process engaging JIPS' partners to input their ideas over the next months.
- **New courses under JIPS' Collaborative Leadership Programme (CLP):** A regional blended [course on the fundamentals of collaborative data processes for Solutions](#) as part of JIPS' CLP, in partnership with IGAD, will take place in June-July 2023. It will kick-start with self-paced online learning followed by an in-person workshop in Nairobi. Check out the spotlight in this report and stay tuned for more!
- **A revamped digital space to spotlight success models for data on displacement and promote learning across contexts:** Further expanding on achievements through its strategic communications, JIPS will rethink its digital presence to leverage good practices from collaborative data processes more effectively and promote lean and effective data ecosystems in internal displacement situations. More than creating shiny new digital platforms, JIPS will elevate its digital presence to cultivate multi-stakeholder partnerships for change, incentivize enhanced data use, and ultimately strengthen pathways towards positive outcomes for IDPs.
- **Learning and thought leadership:** We will continue to emphasize and invest in learning and exchange through fora such as the durable solutions Learning Community, taking a critical stance to our own practice and incentivizing discussion in our field of practice, such as on community engagement in displacement data processes.
- Enhanced collaboration at country and regional levels for the **implementation of the International Recommendations on IDP Statistics (IRIS)**.

PARTNERSHIPS AND FUNDING

Effectively advancing towards Solutions for IDPs requires a sustained effort from donors, governments, and other stakeholders. It calls for prioritizing and investing in collaborative data efforts in internal displacement contexts that have sustainable impact in the longer term. However, this requires important human and financial resources as well as sustained efforts over a longer period. Several challenges arise when it comes to funding these undertakings, including the often-short-term nature of financial support, over-emphasis on data outputs rather than the process (how this data is being produced) and data use, or limited focus on engaging displacement-affected communities and local authorities as key stakeholders next to national and international ones.

To overcome these challenges that impede the sustainability of collaborative platforms and limit the positive longer-term outcomes for those directly affected by displacement, in line with their needs and priorities, **flexible, quality, and sustainable funding are needed**. This will enable JIPS to provide responsive and comprehensive technical and capacity building support to country partners.

As JIPS advances in the third and last year of its 2021-2023 Strategy, it becomes clear that funding and donor attention are unequally spread across JIPS' four strategic goals. Its work in support of nationally owned evidence on internal displacement (Goal 1) as well as collective and responsible data efforts (Goal 2) are thus better resourced than its efforts to facilitate community engagement and inform environments that are conducive to Solutions (Goal 3) or to enable the effective use of data (Goal 4). This despite the priority put on these topics in the Action Agenda.

JIPS BUDGET OVERVIEW 2022		in CHF
Cross-programme (coordination, grants and budget management)		323,176
Delivery of services (HR, programme and travel costs)		1,261,440
Support costs (HR, hosting fees, running costs)		236,285
Total Direct Costs		1,820,901
Overhead		132,830
Total Costs		1,953,731

“Unless we maintain these [collaborative] efforts, we may have nice strategies but that don’t change much in the lives of IDPs. This is not just a moral issue because we are not talking about foreigners, but about citizens affected by conflict or other circumstances that prevent them from enjoying a decent life.”

– Khardiata Lo N'diaye, DSRSG/RC/HC Sudan, at the [JIPS-Norway High-Level Event](#) in June 2023

GOAL 1



NATIONALLY OWNED EVIDENCE ON INTERNAL DISPLACEMENT

SUPPORTED BY:

Norwegian Ministry of Foreign Affairs (NMFA), United States Government through its Bureau of Population, Refugees, and Migration (PRM), Directorate-General for International Partnerships of the European Commission, Peacebuilding Fund (PBF) Sudan, Central Emergency Response Fund (CERF), Danish International Development Agency (DANIDA).

Weaving data into information and information into a comprehensive picture of a displacement situation and action to address it is at the core of JIPS' work – and we do so by leveraging collaboration between key stakeholders. Our approach does not only **generate a common understanding across disciplines and actors of a displacement situation, but the collaborative processes we nurture also foster political will**. This is required to address not only short-term needs of forcibly displaced persons but also impacts of displacement on host communities, as well as infrastructure and services. A holistic response to displacement fosters longer-term resilience and sustainable development that leaves no one and no place behind. They are a necessary building block to build national ownership and guide partners in identifying concrete strategies for advancing durable solutions at the national and subnational levels.

National ownership of responses to internal displacement requires inclusion, involvement, and empowerment for agency and action. In the five contexts JIPS supported in 2022, we have been able to foster and promote all three, importantly by facilitating vertical as well as horizontal coordination and buy-in. **Mexico** features one of the largest collaborative platforms supported, with 15+ actors

“Contexts where the international community has a clearly defined **coordination** hub, structure, or shared approach are **more able to build momentum for solutions** than those that don’t.”

- Proposal for Improving Data for Solutions to internal displacement of the Taskforce of the UNSG’s Special Adviser on Solutions to Internal Displacement

“The best way to inform the policies and programmes to achieve [durable solutions] is having good and quality data about the situation and needs of IDPs – and in this, JIPS will continue to play a vital role [for Mexico].”

- H.E. Francisca Elizabeth Méndez Escobar, Permanent Representative, Permanent Mission of Mexico to the UN in Geneva, at the JIPS High-Level Donor-Partner Event in March 2023

engaged from Government entities, civil society, and the international community – which has supported national ownership at the state and federal levels as well as fed into policy development. **Sudan** showcases Government involvement from the local to the national and regional levels.

The **Philippines** as well as **Somalia** demonstrate a whole-of-government approach when it comes to the implementation of the IRIS by the National Statistical Offices alongside national and international actors. In **Burundi**, building on discussions and a request for profiling in 2022, JIPS is supporting a collaborative data process with focus on community engagement and climate change/disaster risk reduction. In all contexts, political will and national ownership of the processes have been generated through an inclusive collaborative data process, which builds trust in the results and promotes their use to inform concrete action.

JIPS has also contributed to the growing recognition by countries of the importance of making official statistics more inclusive of refugees and IDPs, including through its critical contribution to the Expert Group on Refugee, IDPs and Statelessness Statistics (EGRISS) as well as related standard setting. From anchoring government leadership to strengthening National Statistical Systems and shaping the development agenda in line with the ‘leave no one behind’ paradigm – official statistics and data are instrumental to progress towards durable solutions to displacement and the achievement of the Sustainable Development Goals (SDGs).

5

Country contexts supported through collaborative platforms with focus on whole-of-government approaches linking to national law, policy, and strategy

4

Regional capacity building events on global standards in the Americas (8 countries involved), West Africa (15), East and the Horn of Africa (2)

50+

Partners engaged including National Statistical Offices (NSOs), other government entities, UN agencies, INGOs, donors, and others

100+

Government representatives reached by delivering 8 sessions on data and Solutions at the International Institute on Humanitarian Law (IIHL) Course on internal displacement

Where available, **JIPS' approach builds upon existing coordination structures involving both humanitarian, development, and government partners.** Examples include the Durable Solutions Working Groups (DSWG) in Sudan (co-chaired by UNHCR, UNDP, and DRC), Somalia, and Burundi. It also considers data systems on forced displacement that exist in a given country context, and uses JIPS' mapping expertise to work with international and local organizations, such as SUDIA in Sudan, to develop and contextualize the data collection approach and technical support.

We also emphasize **concrete linkages to broader policy, strategy, and programmatic processes in-country.** We do so by promoting the adoption and championing of global standards, including the Guiding Principles on internal displacement, the IASC Framework on Durable Solutions for Internally Displaced Persons, and the International Recommendations on IDP Statistics (IRIS).



Key informant interviews with IDPs in Chihuahua State, Mexico. 2022. © JIPS

MEXICO

PARTNERS

ACNUR (Oficina del Alto Comisionado de las Naciones Unidas para los Refugiados), ASMAC (Alianza Sierra Madre, A.C.), CDPIM (Comisión para el Diálogo con los Pueblos Indígenas de México), CEAV (Comisión Ejecutiva de Atención a Víctimas), CEAVE (Comisión Ejecutiva de Atención a Víctimas del Estado de Chihuahua), CEDEHM (Centro de Derechos Humanos de las Mujeres), CMDPDH (Comisión Mexicana de Defensa y Promoción de los Derechos Humanos), COESPO (Consejo Estatal de Población de Chihuahua), COESVI (Comisión Estatal de Vivienda, Suelo e Infraestructura del Estado de Chihuahua), COLEF EI (Colegio de la Frontera Norte), COMAR (Comisión Mexicana de Ayuda a Refugiados), CONAPO (Consejo Nacional de Población), CONTEC (Consultoría Técnica Comunitaria, A.C.), DIF Estatal (Desarrollo Integral de la Familia del Estado de Chihuahua), FORO (Foro para el Desarrollo Sustentable, A.C.), IGP-Geopaz (Geopaz. Instituto de Geografía para la Paz, A.C.), INEGI (Instituto Nacional de Estadística y Geografía), JIPS (Servicio Conjunto de Caracterización del Desplazamiento Interno), SEGOB (Secretaría de Gobernación), SGG (Secretaría General de Gobierno del Estado de Chihuahua), JRS (Servicio Jesuita a Refugiados México), and UPMRIP (Unidad de Política Migratoria, Registro e Identidad de Personas).

SUPPORTED BY

U.S. State Department's Bureau of Population, Refugees, and Migration (PRM), UNHCR

Initiated in 2019, JIPS' support to partners in Mexico has spanned the federal and state levels and ranged from capacity building, to facilitating a collaborative [profiling exercise in the State of Chihuahua](#), as well as encouraging the implementation of the IRIS.

With over 20 members of the Technical Working Group – from the federal government, civil society, and the international community –, the Chihuahua exercise is the largest collaborative platform that JIPS has supported so far. It is unique not only in that it enables collaboration along vertical (national/subnational) as well as across different line ministries and different stakeholders) to work towards solutions to internal displacement. But it also represents the first of its kind State-owned evidence base on internal displacement due to generalized violence in-country, paving the way for further development of robust national evidence on internal displacement and the production of official statistics on the phenomenon.

“Our collaboration in the profiling exercise has resulted in an enriching dynamic. This relationship has allowed us to advance and **generate awareness** about the problem of internal displacement, which – although not a new phenomenon – has been exacerbated in our State during the last few years.

At the end of the day, all these efforts must culminate in **concrete provisions within the budget** [...] For this reason, we have carried out several negotiations with different strategic members of the state government agencies that could allocate specific resources to displaced persons.”

- Mr. Oscar González-Luna, Chihuahua State Deputy Secretary of the Interior in private communication with JIPS

KEY ACHIEVEMENTS

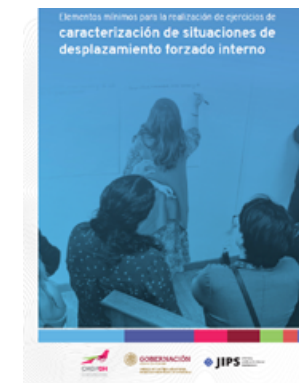
The preliminary results from the profiling exercise implemented in Chihuahua State informed state-level cabinet discussions on earmarking funding for the response to internal displacement in 2023. Having dedicated funding would ensure that IDPs are included in state-level programming and response.

The exercise in Chihuahua also received significant traction at the federal level: it was featured at the event series “Foros Sobre Movilidad Humana”, organized by the Unidad de Política Migratoria, Registro e Identidad de Personas (UPMRIP) in Michoacán, Baja California, Guerrero, and Campeche. It also led to the publication “[Elementos mínimos para la realización de ejercicios de caracterización de situaciones de desplazamiento forzado interno](#)” that translates JIPS’ guidance on the topic and tailors it to the Mexican context, together with UPMRIP and the Mexican Commission for the Defense and Promotion of Human Rights (CMDPDH).

JIPS’ engagement in Mexico also involved other activities such as an intervention at a workshop on “Internal Displacement Data Systems, International Standards and practices, and way forward in Mexico”, held on 30 November 2022 and co-hosted with UPMRIP, UNHCR, IOM and ICRC.

WHAT’S NEXT

JIPS will support the Technical Working Group in the production of the comprehensive exercise report as well as related outputs to support the joint dissemination of the results. We have also been documenting the process and preliminary outcomes from the exercise, so that it can be replicated in other states in Mexico as well as support further action by the Chihuahua State Government to improve the lives of IDPs.



COLLECTIVE AND RESPONSIBLE EFFORTS ON DISPLACEMENT DATA AT THE COUNTRY LEVEL

SUPPORTED BY

Norwegian Ministry of Foreign Affairs (NMFA), USAID's Bureau for Humanitarian Assistance (BHA), Danish International Development Agency (DANIDA).

JIPS has been developing and cultivating profiling as a collaborative process that enables the collection, analysis, and use of rigorous data. Our support involves not only the facilitation of the process and the provision of technical expertise, but also the development of relevant capacities and tools for governments – as the main duty bearers to design responses to internal displacement – as well as civil society, national, and international actors. This enables relevant stakeholders to effectively work together and use the resulting evidence collectively and in responsible ways.

JIPS' capacity development support has seen a redesign in 2022 leading to the launch of the [Collaborative Leadership Programme](#) (CLP). **The training suite addresses the main question we continued to face when discussing Solutions to internal displacement: How do we work better together?** Our answer is simple: moving towards systemic, coordinated, and cohesive approaches to solutions to displacement is not merely a matter of good will. It requires specific skills to build trust, foster and sustain collaborative spaces, unite technical and political agendas, generate locally owned evidence, and act in a concerted manner based on a shared understanding of a displacement context. It necessitates a critical shift in mindsets and capacities towards a culture and system that are anchored in Collaborative Leadership – at all levels, including decision making.

“Trust, collaboration and leveraging partnerships among relevant data hosts emerged again as *conditio sine qua non* any secure data-sharing effort cannot be successful.”

- JIPS in [Is Anonymization Enough To Protect The Data Privacy Of People Affected By Crises?](#) (11 Jan 2022)

350+

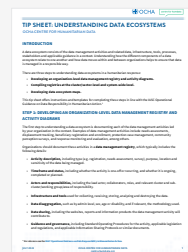
People trained. Additionally, for the 7th consecutive year JIPS contributed to the Course on the Law of internal displacement of the International Institute on Humanitarian Law (IIHL), by delivering eight training sessions on data collection and durable solutions for internal displacement in English, Spanish and French

72

Organizations benefited from JIPS’ tools and guidance, including:



Facilitation Sheet on Community-Based Validation & Pairwise Ranking



Tip Sheet on Understanding Data Ecosystems

The training is a direct answer to the call in the UNSG Action Agenda for a fundamental change in the way we approach Solutions to internal displacement, towards stepped-up development action, whole-of-government and whole-of-society approaches. Being able to navigate both technical data and political challenges of joined-up approaches is exactly where JIPS is seeking to share its experience in professionalizing collaboration and in inspiring a mind-set shift.

JIPS furthermore continued its strong engagement in the Expert Group on Refugee, IDP and Statelessness Statistics (EGRISS), as a long-standing Steering Committee member as well as by co-leading its workstream on country support and capacity development at the country and regional levels to implement the recommendations. Key highlights in 2022 included the technical support provision to **Somalia** by JIPS on behalf of EGRISS (see impact story), and the joint implementation of a [diagnosis exercise](#) of capacity needs and enabling factors to implement the IRIS in [Central America](#), West and East Africa. JIPS furthermore developed and helped fine-tune tools to support actors from the National Statistical System (NSS) with the IRIS implementation, including testing and refining the Solutions Measure, contributing to the Compilers’ Manual revision, developing a pocket guide on IRIS implementation, and elaborating a standard questionnaire module for the identification of IDPs in different data sources for official statistics drawing on [JIPS’ related work](#). These efforts were presented and discussed at the [EGRISS all-members meeting organized in Addis Ababa](#) in November 2022, where we co-facilitated three sessions.

Finally, JIPS also contributed to the topic of the safe and responsible use and sharing of data. This included the joint publication with the OCHA Center for Humanitarian Data of a [Tip Sheet on Understanding Data Ecosystems](#). The tool attracted significant attention, registering over 860 unique downloads in the six months following its publication. Expanding on the topic, JIPS is developing a technical brief on the **Mapping of the Information Landscape** that can guide the structured mapping and analysis of the existing displacement information landscape in a country, such as previously done as part of JIPS’ country support in South Sudan, Ukraine, Burkina Faso, Burundi, and Somalia. The tool will be made available on JIPS’ website in early 2023.



COLLABORATIVE LEADERSHIP PROGRAMME

SUPPORTED BY

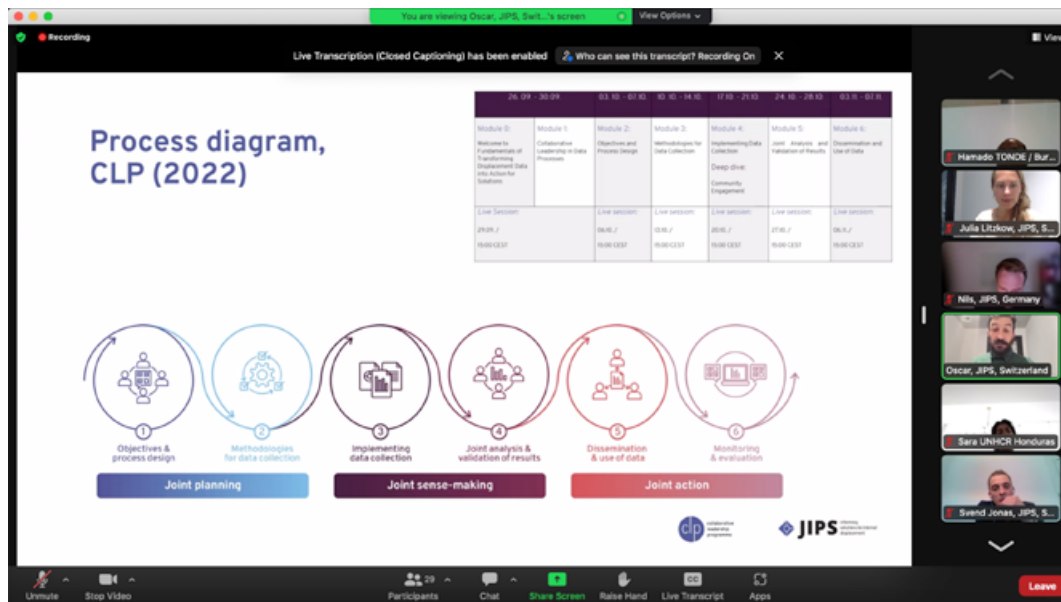
USAID's Bureau for Humanitarian Assistance (BHA), Norwegian Ministry of Foreign Affairs (NMFA)

On 26 September 2022, JIPS launched the [Collaborative Leadership Programme](#) – **a new hands-on, blended training suite that leverages and scales the transformative, multiplying, and long-term positive impact that collaborative data processes achieve**. The CLP expands on JIPS' former Profiling Coordination Training (PCT), run successfully since 2012 and anchored in JIPS' expertise based on 14+ years of experience working in diverse displacement contexts and supporting collaborative data efforts in more than 50 countries. JIPS revisited the PCT training concept and approach and updated it according to current good practice and experiences of JIPS as well as input from partner organizations and training experts.

Course 1 of the CLP provides participants with a comprehensive overview of collaborative approaches across an entire data lifecycle in displacement settings, focusing both on the operationalization of global standards on durable solutions and the value of professionalizing collaboration. It teaches a combination of technical, process, and collaboration skills, which are crucial to deliver on policy priorities set out in the UNSG Action Agenda, such as improving ways of working across the HDP nexus and strengthening accountability to displacement-affected people.

“The workshop provided us with very concrete and easy-to-follow tools for collaboration in data processes, in the data design, in the data collection, data dissemination and most importantly, the data use.”

– Ms. Oxana Maciucu, UNDP



First live session of the 2022 CLP course on the fundamentals of collaborative data processes in internal displacement situations.

KEY ACHIEVEMENTS

Course 1 of the CLP “**The fundamentals of transforming displacement data into action for solutions**” was held online and ran over a 6-weeks period. Participants particularly appreciated the spotlight on peer-to-peer exchange, the deep-dive on meaningfully engaging people with lived displacement experiences, and the learnings around both technical Solutions data and practical coordination skills. With a new set of tools in their toolbox, participants are equipped to approach their work in a more collaborative way to develop Solutions to displacement tailored to their respective country contexts. Several participants have already started applying their learnings of the CLP in their work and are acting as catalysts for collaborative data efforts within their organizations.

32 participants from 20 countries and 16 actors from humanitarian, development, peacebuilding, governmental and civil society entities took part. 32% of all participants were government representatives including from Mexico, Burkina Faso, Liberia, Nigeria, Somalia, and Cote d’Ivoire; 50% from intergovernmental actors and the UN; and 18% from Non-Governmental Organizations (NGOs).

WHAT’S NEXT

The 2023 edition of JIPS’ CLP course on the fundamentals of the collaborative data process will leverage JIPS’ existing partnership with the Intergovernmental Authority for Development (IGAD) and specifically focus on the East and Horn of Africa region. Planned to take place over six weeks in June-July 2023, the course will be implemented in a hybrid format combining self-paced online learning with a 3-day in-person training in Nairobi, Kenya.



© SNBS

SOMALIA

PARTNERS

Somalia National Bureau of Statistics (SNBS), JIPS, EGRISS, UNHCR.

Other partners involved: Somalia Durable Solutions Secretariat; Somalia Durable Solutions Unit; Ministry of Planning, Investment and Economic Development (MoPIED); IOM, UNFPA, OCHA.

SUPPORTED BY

USAID's Bureau for Humanitarian Assistance (BHA), Norwegian Ministry of Foreign Affairs (NMFA), Directorate-General for International Partnerships of the European Commission (DG-INTPA)

In May 2021, the Somalia National Bureau of Statistics (SNBS) requested EGRISS' support to help improve the availability and robustness of data on IDPs. JIPS on behalf of EGRISS is leading the technical support to the SNBS.

The SNBS works to develop a strategic IDP Statistical Sector Plan to feed into a new National Strategy for the Development of Statistics (NSDS), alongside other sector plans. **With this approach, Somalia provides for a unique and innovative example for the implementation of the IRIS at the country level, paving the way for establishing a robust system to produce national official statistics on IDPs.** It can serve as an inspiring use case for other countries as well as EGRISS, offering a concrete pathway to accelerate progress on IRIS roll-out and ultimately durable solutions moving forward.

KEY ACHIEVEMENTS

In August 2022, JIPS facilitated a workshop with international NGOs and UN agencies in Nairobi, Kenya. Attended by 36 participants from 10 organizations, the meeting promoted a hands-on and technical discussion around the production of national statistics on internal displacement in Somalia. Key outcomes include a



© OCHA | Iason Athanasiadis

INCLUSIVE SOLUTIONS DATA THAT CONSIDERS PEOPLE AND PLACES

SUPPORTED BY:

United States Government through its Bureau of Population, Refugees, and Migration (PRM); Directorate-General for European Civil Protection and Humanitarian Aid Operations (ECHO) of the European Commission, USAID's Bureau for Humanitarian Assistance (BHA), Norwegian Ministry of Foreign Affairs (NMFA), Danish International Development Agency (DANIDA).

Accordingly, the **places that displaced persons inhabit, leave behind, or integrate into need to be understood as closely linked to the displacement context**, and thus considered not as a backdrop but as an integral part of durable solutions analysis and response. This has been a long-time focus of our work and is a focus area of our 2021-2023 Strategy.

In this regard, how to **engage communities effectively and meaningfully in data processes** has been front and center in 2022. This resulted in flagship publications that provide pathways to make the UNSG's Action Agenda a reality when it comes to ensuring the inclusive responses and active and informed participation of IDPs and host communities in decision making. Combining thought leadership with its experiences and lessons learned across displacement contexts, JIPS reflects on [whether data disaggregation is enough to ensure inclusive Solutions for IDPs](#), discusses the [spectrum of community engagement approaches](#) and their value at each stage in a data process – critically unpacking the meaning of 'community engagement' –, and provides practical guidance for [techniques to involve communities in a joint analysis process](#). But most of all, we have ensured that a durable solutions analysis process included all displacement-affected communities in the supported country contexts, from Sudan to Mexico and the Philippines.

“[In the whole issue of data collection], I would like to talk to you about the great power the people can have when they are informed and all the transformative action they can have when they design evidence-based strategies.”

– Santiago Avila, Youth Against Violence, in: JIPS, June 2022. [Event Summary Note | JIPS-Norway high-level event 2022](#)

5

E-learning courses and webinars on durable solutions – reaching 600+ participants

4

Technical papers and tools on meaningfully engaging communities in data processes

1

Flagship publication on urban displacement and engagement with urban stakeholders at WUF11

3

Trainings to improve capacity on context analysis and qualitative approaches as part of durable solutions analysis, with 25 stakeholders incorporating those into their data efforts (Sudan, Mexico)

Following the launch of JIPS’ research publication “[Working With Cities To Deliver Solutions For Displacement: What We Can Learn From Urban Profiling Practice](#)”, JIPS co-hosted the GP2.0 Winter Event “[Addressing Internal Displacement: The Role of Cities](#)” (January). Attracting great interest from across the globe, the event brought together over 300 participants, including local authorities and representatives of displacement-affected communities, to discuss good practices on how cities can take an active role to prevent, protect, and find solutions for internally displaced persons. Additionally, JIPS co-organized two networking events at the World Urban Forum 11 (June), together with the Global Alliance for Urban Crises, the United Cities & Local Governments (UCLG), IMPACT Initiatives, the Urban Settlements Working Group, and others.

Last year also saw the [GP2.0 e-learning course on durable solutions](#) go live in October 2022. JIPS contributed substantially and extensively to this multi-stakeholder product. The e-course includes several examples from JIPS-supported exercises and features various tools that JIPS developed or contributed to, including the [Interagency Durable Solutions Indicator Library](#), the [5-part video series](#) on the basics of durable solutions analysis, and more.

JIPS furthermore contributed to the GP2.0 online event on returns and durable solutions (May), which featured the large-scale durable solutions analysis implemented in Sudan, in addition to the earlier mentioned training sessions on durable solutions analysis at the IIHL. The JIPS-led Durable Solutions Learning Community furthermore organized two webinars on [area-based approaches](#) (May) and [community engagement in data processes](#) in displacement situations (July).

In 2020-2022, a large-scale, collaborative durable solutions analysis was implemented covering 17 localities in Darfur, South Kordofan and Blue Nile (Sudan) to provide the much-needed baseline that can inform humanitarian, development, and peacebuilding efforts. It aimed at supporting peacebuilding efforts in-country and linked them to durable solutions for the over three million people internally displaced following three decades of war and unrest.



Action planning session in September 2022 in Blue Nile, Sudan. © UNHCR

SUDAN

PARTNERS

The Peacebuilding Fund (PBF) implementing partners in Sudan (UNHCR, UNICEF, UNDP, UN-Habitat, FAO, and IOM), the Durable Solutions Working Group (DSWG) Sudan, the Data and Evidence Working Groups (DEWG), the local NGO SUDIA, and the relevant state and locality authorities in Darfur.

SUPPORTED BY

United States Government through its Bureau of Population, Refugees, and Migration (PRM), Peacebuilding Fund (PBF) Sudan, Central Emergency Response Fund (CERF)

While the renewed outbreak of conflict has drastically disrupted related efforts, the exercise offers innovative practice and lessons on generating Solutions data at scale. JIPS’ support to partners in Sudan started with a pilot exercise implemented in 2016-2019 in El Fasher, Darfur, and was then extended to support the above-mentioned broader initiative as part of the programmes under the Peacebuilding Fund (PBF) and the Central Emergency Response Fund (CERF) in Sudan.

KEY ACHIEVEMENTS

Locality Action Plans were developed, translating the evidence generated through the participatory, large-scale durable solutions analysis supported by JIPS into concrete programming for humanitarian, development, and peace responses. The Action Plans reflect priorities of relevant local actors and communities, while also linking to Sudan’s (draft) National Durable Solutions Strategy. In this way, they can serve to pilot the operationalization of the Strategy at the locality level, providing a pathway for joined-up interventions that build on each HDP actors’ comparative advantage and contribute to localized Collective Outcomes – commonly agreed-upon areas of impact where comprehensive programming will lead to reduced needs and risks as well as enhanced resilience.

“For displacement to end, we discuss and should work together. Each actor has a role. **We, as IDPs, should contribute to the process** by collaborating [with the government and the international community], expressing our opinions, and effectively participating in defining the solutions because this is the only way to change the current [displacement] situation.”

– Interview conducted with an IDP Representative by JIPS during the action planning workshops in Darfur, Sudan, in 2021

“The community validation techniques as introduced by JIPS were fantastic. As facilitators we truly enjoyed the group discussions. We acquired **realistic findings**. As UNHCR, we will aim to apply the same approach in all the localities in Blue Nile State.”

– UNHCR facilitator after the community validation workshop in Blue Nile, August 2022

“The IDP community faced a lot of challenges and **solutions for these issues cannot be achieved without including us to speak about our issues** in detail. Workshops or discussions that do not include IDPs are ineffective. Therefore, our participation in the [durable solutions workshops] was of particular relevance.”

– Mohammad Ibrahim Dabuk, Chairman of the Higher Committee for IDPs in East Darfur, October 2021 (see [recording](#))

Engagement with the PBF Secretariat in Sudan also resulted in the delivery of a virtual training session on durable solutions in Sudan, organized by the UNSSC and PBF and attended by over 70 participants. JIPS also contributed thinking to the Durable Solutions Working Group (DSWG) efforts to enhance the durable solutions architecture in-country, with a particular focus on data collection and data processes. Further engagement included working with the Special Adviser on Durable Solutions to the Deputy Special Representative of the Secretary-General, UN Resident Coordinator and Humanitarian Coordinator in Sudan (DSRSG/RC/HC) – Professor Walter Kaelin – in developing the National Durable Solutions Strategy.

WHAT'S NEXT

JIPS will continue engagement with the DSWG in Sudan to finalize an **advocacy brief documenting the Action Planning process** and continue discussions with PBF, UNSSC, and DRC Sudan on the **online training related to durable solutions** in Sudan. Additionally, JIPS will also continue engaging with the DSWG on the deployment of a longer-term advisor in Sudan that can support coordination around data and evidence, with the objective of strengthening data processes to inform long-term Solutions.*

*The renewed conflict in 2023 has brought these efforts to a halt. We remain ready to support partners in-country as needed.

SNAPSHOT



COMMUNITY ENGAGEMENT

PARTNERS

The Peacebuilding Fund (PBF) implementing partners in Sudan (UNHCR, UNICEF, UNDP, UN-Habitat, FAO, and IOM), the Durable Solutions Working Group (DSWG) Sudan, the Data and Evidence Working Groups (DEWG), the local NGO SUDIA, and the relevant state and locality authorities in Darfur.

SUPPORTED BY

United States Government through its Bureau of Population, Refugees, and Migration (PRM).

Designing collaborative data processes with displacement-affected communities at the heart is not only recognizing their basic human rights, but also their critical agency in effectively addressing the displacement situation. It is a game-changer towards people-centered Solutions with lasting impact. Yet, while there is wide agreement on the importance of ensuring that communities can adequately participate in decisions that affect them, answering the questions of who, when, how, and for what to concretely engage often-diverse community groups in joint data processes remains a persistent challenge in forced displacement contexts.

In 2022, JIPS produced a Technical Brief and hands-on Canvas on “Community Engagement in Data Processes in Displacement Contexts”, with key considerations and case studies based on JIPS’ country support (including in Greece, Myanmar, Sudan, Syria, and Ukraine). They help decision-makers and practitioners to understand the **spectrum and value of approaches that can be applied to engage displacement-affected communities in collaborative efforts to design, collect, analyze, and use data** on forced displacement. Importantly, they stir critical reflections and challenges current ways of working and communicating about Community Engagement – thus charting a pathway to strengthen inclusive

IDP community session in Lagos, Nigeria. January 2023. © JIPS | Mirjam Kuschnitzki

“IDPs are citizens and residents of their country, and States have the primary responsibility to protect their rights and respond to their needs. [...]

Action to address internal displacement must recognize the rights and agency of IDPs and host communities and ensure their active and informed participation in decision-making.

Approaches should be guided by the knowledge of local communities and address the specific needs of people of different ages, genders, abilities, and diversities, including by promoting gender equality and the best interests of the child.”

– United Nations Secretary-General’s Action Agenda on Internal Displacement

approaches throughout data processes and to unlock transformative solutions for and with displacement-affected communities, systematically.

The poster-size Canvas offers an easy-to-use and effective tool for understanding, structuring, and effectively planning a Community Engagement strategy as part of a collaborative data process in displacement contexts. It simplifies Community Engagement into fundamental levels and provides targeted questions to guide decisions for each level and at every stage in a data process. These tools can be used in conjunction with JIPS’ other tools such as the [Technical Brief on Joint Structured Analysis Techniques](#) (JSAT; 2021) and [Joint Analysis Guide](#) (2021), as well as the related [Facilitation Sheet on Community-Based Validation & Prioritization Using Pairwise Ranking](#) (2022).



WHAT IS NEXT

In January 2023, IOM and JIPS will jointly kick off a **Collective Intelligence initiative on Disaster Displacement and Anticipatory Action for displacement events** with a specific focus on the East and Horn of Africa. The project is supported by the Directorate-General for European Civil Protection and Humanitarian Aid Operations (DG-ECHO) of the European Commission, and the U.S. State Department’s Bureau of Population, Refugees, and Migration (PRM).

Collective Intelligence is an innovative process by which primary data is gathered from citizens to generate a richer understanding that is more inclusive of diverse perspectives and experiences. Such approaches have shown to be particularly useful in the analysis of complex situations and systems, enhancing the voices of communities and especially of those underrepresented. Funded through the European Union’s Humanitarian Implementation Plan (HIP), the joint IOM-JIPS project aims to contribute to greater global capacity across the humanitarian sector, global governance models, and national authorities for prevention and response planning to disaster displacement. In parallel, it will fuel better evidence and understanding of how displacement occurs in disaster contexts and bolster long-term risk assessment and evaluation of appropriate policy responses.



GOAL 4

A collaborative approach helps ensure better data and results that are validated by affected communities, foster trust between partners, and create shared ownership of the findings of a data process. While these are vital ingredients, they are not enough to ensure the effective uptake of insights in decision-making and to drive positive change in the lives of people affected by displacement – the relationship is not direct and data use is not a given.

In 2022, JIPS has expanded its work to facilitate and encourage the use of the results from collaborative data processes we have supported. In the **Philippines**, JIPS worked with UNHCR, the Resident Coordinator's Office, and profiling partners to bring attention at the local, regional, and global levels to the profiling results and **preliminary insights on their use** (see [impact story](#)).

In **Sudan**, JIPS conceptualized and supported the implementation of a **locality-level action planning process** (see [impact story](#)). This resulted in 12 Locality Action Plans for localities in Darfur, Blue Nile, and South Kordofan that helped to operationalize the (draft) National Strategy on Durable Solutions for IDPs in priority areas. JIPS also helped consolidate key insights and messages from the process into an advocacy brief to help mobilize political and financial support for the programmatic implementation.

In **Mexico**, JIPS worked with partners in the Technical Working Group (see [impact story](#)) to elaborate a **Data Use Strategy** that provides a common framework for joint activities that – together – facilitate uptake, data use, and ultimately maximum positive impact on the lives of displaced persons. It informs a coordinated effort amongst partners to capitalize on the political momentum generated by the exercise and to translate the findings of the report into concrete responses to internal displacement in Chihuahua.

Beyond its country support, JIPS has also continuously invested in enhancing its approach to strategic communications, combining visual, narrative, and interactive techniques in innovative ways to make data and insights accessible to policymakers and other key constituencies for action. Examples include the [data story on the results from the durable solutions analysis in Sudan](#), produced together with the DSWG.

© JIPS

EFFECTIVE USE OF DISPLACEMENT DATA IN POLICIES AND PROGRAMMES

SUPPORTED BY

United States Government through its Bureau of Population, Refugees, and Migration (PRM), USAID's Bureau for Humanitarian Assistance (BHA), Directorate-General for European Civil Protection and Humanitarian Aid Operations (ECHO) of the European Commission, Norwegian Ministry of Foreign Affairs (NMFA), Danish International Development Agency (DANIDA).

IMPACT STORY



Key informant interview during the profiling exercise in Basilan province, Philippines. November 2019. © UNHCR Philippines

PHILIPPINES

PARTNERS

Coordinated by a Profiling Working Group led by UNHCR Philippines, Ministry of Social Services and Development (BARMM), Ministry of Local Governance (BARMM), Provincial governments of Basilan, Sulu and Tawi-Tawi, IRDT (Integrated Resource Development for Tri-People; implementing NGO), UN agencies.

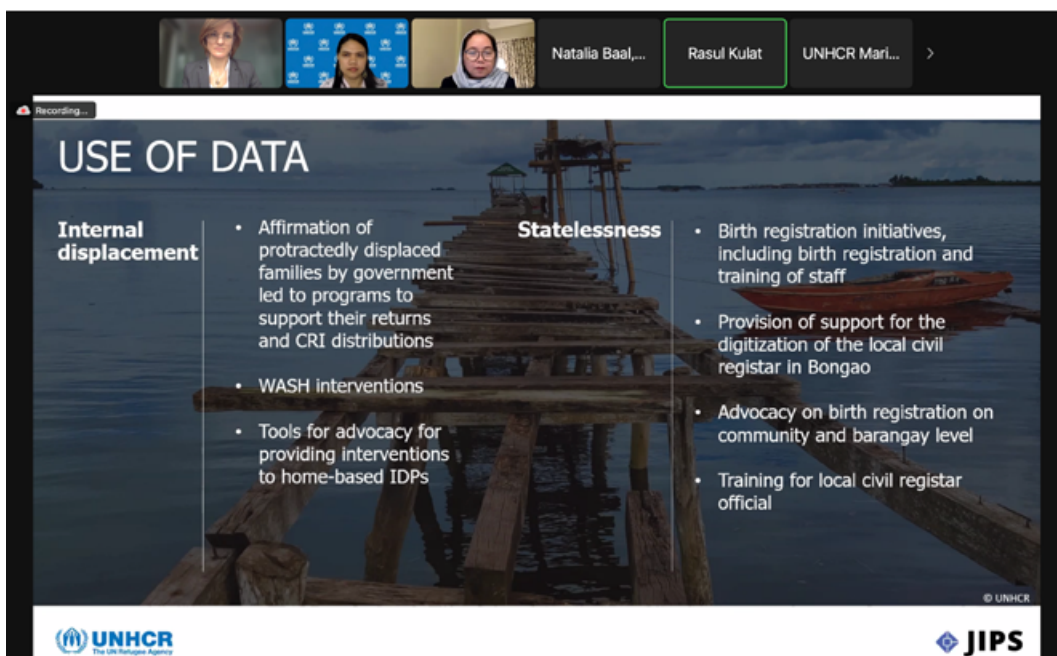
SUPPORTED BY

USAID's Bureau for Humanitarian Assistance (BHA), Norwegian Ministry of Foreign Affairs (NMFA).

The profiling exercise on IDPs and people at risk of statelessness in the island provinces, completed in 2021, is among the prime examples where the direct use of the information generated through a collaborative data process is used for advancing concrete actions to address internal displacement and statelessness. The process was coordinated by a Profiling Working Group that was led by UNHCR Philippines, the Ministry of Social Services and Development (MSSD) and the Ministry of the Interior and Local Government (MILG) of the BARMM region with technical support from JIPS.

KEY ACHIEVEMENTS

The positive impact of the profiling exercise was showcased during a [global virtual event](#), co-organized by JIPS and UNHCR Philippines on 26 January 2022. It expanded on a series of local and regional-level launch events held in a hybrid format in each of the island provinces as well as Mindanao, in the summer of 2021. The value of the collaborative process at the provincial, national, and global level that underpinned the exercise was specifically highlighted as being critical, not only for the positive uptake of the results but also for the **longer-term collaboration and commitment of BARMM and province-level authorities to the cause of IDPs and the Sama Bajaus.**



The global launch event gathered over 100 participants and featured high-level speakers. Watch [here](#).

“The **value of the collaborative process** that underpinned the exercise was highlighted across the board as being critical, not only for the positive uptake of the results but also for the longer-term collaboration and commitment of BARMM and province-level authorities to the cause of IDPs and the Sama Bajaus.”

– JIPS in [Strong Uptake of Profiling Results from Basilan, Sulu, Tawi-Tawi \(Philippines\) on internal displacement and Statelessness](#), 21 February 2022

The event counted more than 100 participants from government counterparts in the Philippines and other countries, donors, the international community working on internal displacement and statelessness, and civil society organizations.

It featured high-level speakers including the Special Rapporteur on the human rights of IDPs, the Minister of Social Service and Development of BARMM, the UN Resident Coordinator to the Philippines, the UNHCR Chief of the IDP Section, and the Head of Secretariat of the EGRIS Secretariat.

WHAT'S NEXT

JIPS is currently conducting an independent evaluation of the profiling exercise implemented in the BARMM region in the Philippines. Preliminary insights indicate further positive outcomes from the exercise, including that the profiling results underpinned evidence-based advocacy that helped advance IDP bills at the national as well as the BARMM levels, being currently discussed in the Senate. They furthermore informed the development of a municipal ordinance on the protection of the IDPs' rights in the Municipality of Patikul, Sulu; 5 more municipalities are working on similar policies at the moment.



Lagos, Nigeria. January 2023. © JIPS | Mirjam Kuschnitzki

ANNEX I

JIPS' SUPPORT REQUEST PROCESS

JIPS works with a formal support request process (see below). Requests can be submitted by any partner or joint initiative and throughout the year, though JIPS prioritizes support to collaborative data efforts.

Working in contexts of both conflict and disaster induced displacement, JIPS also engages with country and regional actors outside formal support requests, such as through its Regional Advisors who can provide strategic advice as well as by building capacity on context-relevant topics (e.g. durable solutions, IDP statistics, collaborative data process).



STRATEGIC AND PROACTIVE ENGAGEMENT

- Strategic advice and dialogue
- Capacity development and targeted advocacy on context-relevant topics



FORMAL REQUEST FOR SUPPORT

By a multi-stakeholder partnership and leading to agreed-upon Terms of Reference for JIPS' support such as:

- Support individual aspects of the data value chain (e.g. information landscape mapping, operationalise/measure progress towards strategies on internal displacement, implement the IRIS);
- Support fully-fledged collaborative data processes, such as profiling/ durable solutions analysis (incl. a collaborative platform, design fit-for-purpose tools, contextualise global standards, build capacities, promote an inclusive approach, etc.);
- Training and deployment of Durable Solutions Experts.

PRIORITISATION OF REQUESTS

Jointly done by JIPS and its Executive Committee based on the following criteria:

- External: Relevant multi-stakeholder engagement; expected impact (use of data); feasibility of collaborative data process; Executive Committee's strategic interests;
- Internal: Continuity; complementarity; human resources.



JIPS' TECHNICAL SUPPORT

To collaborative data processes, IRIS implementation, and other types of support in diverse displacement contexts.

Contact JIPS at info@jips.org



JIPS' Executive Committee members and interagency set-up:



In 2022, JIPS was supported by:

