

TUESDAY, 14 JUNE 2022 | 13:00 - 15:00 CEST | VIRTUAL

DELIVERING ON THE UPCOMING
UN SECRETARY-GENERAL'S
ACTION AGENDA ON
INTERNAL DISPLACEMENT:

Making the Key Shifts a Reality for Data

High-level event co-hosted by:



Permanent Mission of Norway
Geneva



AGENDA

1.00 PM | WELCOME NOTE

1.20 PM | KEYNOTE

1.30 PM | TRANSFORMING DATA INTO ACTION:
THE POSITIVE CHANGES WE ALREADY SEE

1.55 PM | LIGHTNING TALKS:
KEY SHIFTS, FORWARD-LOOKING
SOLUTIONS, AND WHAT'S NEXT

*Followed by a Q&A and interactive discussion, with
space for brief contributions from attendees.*

2.50 PM | CLOSING REMARKS



High-level event co-hosted by:



Permanent Mission of Norway
Geneva



WHO WE ARE





JIPS

informing solutions to internal displacement

Interagency Executive Committee



UNHCR
The UN Refugee Agency



Empowered lives.
Resilient nations.



OCHA



**NORWEGIAN
REFUGEE COUNCIL**



**UNITED NATIONS
HUMAN RIGHTS
SPECIAL PROCEDURES**
SPECIAL RAPPORTEURS, INDEPENDENT EXPERTS & WORKING GROUPS



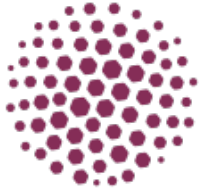
IDMC Internal
displacement
monitoring
centre



**DANISH
REFUGEE
COUNCIL**



OUR SERVICES



Facilitating collective data efforts at country level

Through profiling exercises, strategic advice, and application of tested tools and approaches



Developing capacities

Of national and local governments, humanitarian and development partners, and other key stakeholders to apply global standards and to own and effectively use displacement data



Shaping global practice and standards

Through quality training, tools and guidance, and by contributing to global initiatives and discussions from our diverse and rich experience

High-level event co-hosted by:



Permanent Mission of Norway
Geneva



OUR IMPACT





A fit-for-purpose model

With 13+ years of proof of concept on establishing and sustaining collaborative processes on Displacement data

UPCOMING 2023

Development of a return-on-investment measure

HOW WE KNOW

JIPS IS A FIT-FOR-PURPOSE MODEL

Perceived as an **impartial actor** and **honest broker** striving to achieve consensus around issues of displacement data

Widely **acknowledged and respected technical expertise**

Systematic adoption of a **collaborative and consultative** approach

Unique role at the intersection **between the humanitarian and development** communities

42 collaborative profiling

platforms established in-country – **33** of which engaged Government authorities and National Statistical Offices alongside UN agencies, international and local organisations, academia and other actors.

12 in **12** countries

we supported in the past have requested follow up – demonstrating **sustained political will** and **interest in JIPS' continued support**, highlighting the fact that the collaborative processes we establish outlive the individual profiling exercises.

5+

National Development Plans and Strategies on Durable Solutions directly informed by profiling processes

300+

Benefitted from **capacity building activities** incl. remote training tailored to country/regional contexts, peer-to-peer learning, and in-depth training on the profiling coordination process

20

National Statistical Offices engaged

High-level event co-hosted by:



Permanent Mission of Norway
Geneva



ACHIEVEMENTS AGAINST OUR STRATEGY 2021-2022





From data

GOAL 1

Enabling nationally-owned evidence on displacement



National and local government and NSOs working in contexts of internal displacement

GOAL 2

Enabling collective and responsible efforts on displacement data



Governments, UN agencies, civil society, private sector, academia, and donors

GOAL 3

Leveraging communities and the wider context in data for solutions



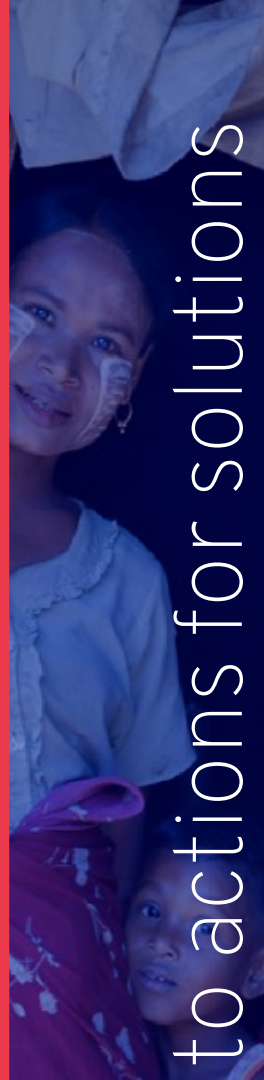
Displacement-affected communities, the wider society, and the local context

GOAL 4

Enabling the effective use of displacement data in policies and programmes



Decision makers in government, UN agencies, and civil society



to actions for solutions

A faint, light blue world map is visible in the background of the slide, centered behind the text.

KEY SHIFT 1

Political Will and National Ownership

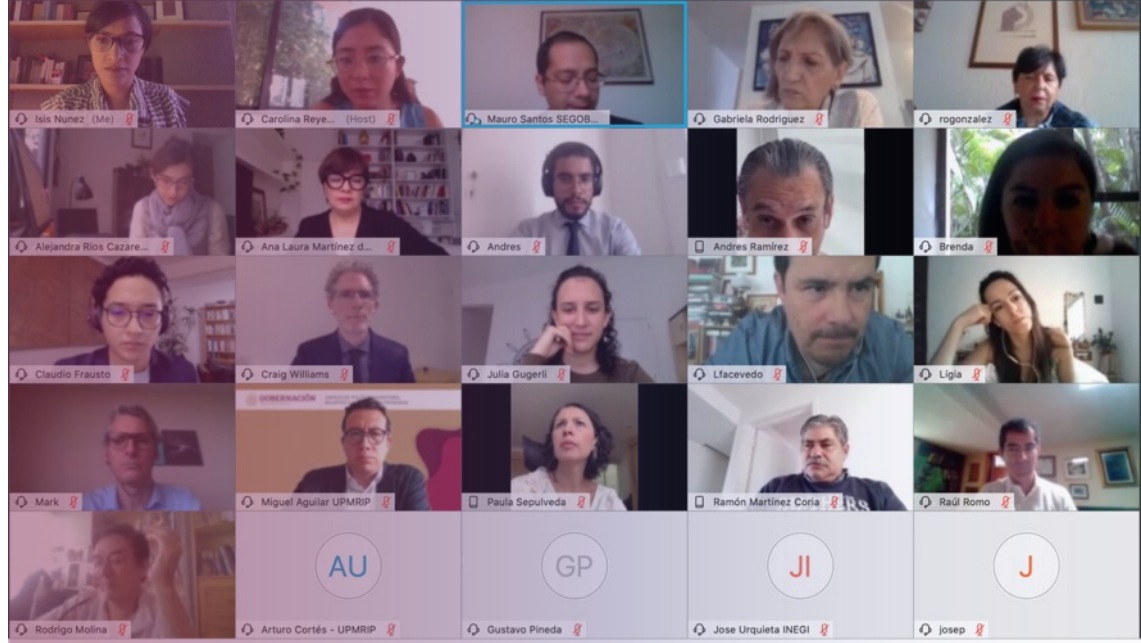
KEY MESSAGE ①

Collaborative data processes
are a first critical step towards
fostering national ownership
and achieving Durable
Solutions to displacement



KEY MESSAGE ②

Effectively implementing international standards requires capacity building and a whole-of-government approach



Enabling nationally-owned evidence on internal displacement



Enabling government-led data production

Government-led profiling exercises in **Sudan, Philippines, Mexico, Burundi**

Developing government capacity to apply global standards

- Nationally-owned data production and IDP Statistics:
- At country level: **Somalia, Ukraine**
 - At regional level: **ECOWAS, IGAD, SICA** (more than 20 NSOs involved)
 - **EGRIS – SG2** is jointly promoting a collaborative approach to capacity support
 - Peer-to-peer implemented
 - **EGRIS E-Learning**

Connecting governments with other key actors

Provincial, national and global event on the profiling exercise in the **Philippines**

Regional Advisors
EAGL, Americas, WA

Making knowledge on best practices & global standards accessible

UPCOMING 2023

Digital information products to disseminate global standards and best practice, including the IRIS

JIPS conference on nationally owned data

KEY SHIFT 2

Whole-of-Society
and Communities' Agency

KEY MESSAGE ②

Affected communities need to be engaged as agents in efforts towards Solutions, including in the data and analysis that inform the policies and programmes that affect them



KEY MESSAGE ③

A more nuanced approach to Durable Solutions is needed



Leveraging communities and the wider context in data for solutions

In-country support to partners to **inform solutions**

Technical support to in-country data producers on analysing conducive environments

8 DS studies in Darfur, a series of five thematic briefs seeking to inform the design of conducive environments for Solutions

15 locality-level community engagement sessions

Developing **capacity** to inform solutions to **urban displacement**

Research on the use of urban profiling in Somalia, KRI, Ukraine, Syria and Yemen, providing key insights and takeaways

Developing **capacity** to analyse **conductive environments**

Community Engagement Handbook: Guidance & tools

Seed-funding to support partners in mainstreaming this approach in data initiatives

UPCOMING 2023

Build **partnerships** to explore **Collective Intelligence Approaches** in Solutions analysis

Capacity support to Resident Coordinator System

Curating and making best practice **accessible**

Interactive repository of digital stories on how to engage communities, analysis of the local context and the wider society to inform solutions: Featuring **Ukraine, Sudan**

P2P: Internal Displacement in Latin America: Tools for the Implementation of Durable Solutions

KEY SHIFT 3

Collective humanitarian,
development and peace results

KEY MESSAGE ④

Area-based approaches can enable joint HDP efforts towards effective solutions



Enabling **collective** **and responsible** efforts on displacement data

Jointly producing and leveraging data through **inclusive processes**

Developing **capacity** to enable collaboration

Enabling data users to establish **safe, ethical, and effective** data processes

Profiling exercises to provide technical and collaboration support

Measuring progress towards **durable solutions**

Global policy and **peer-to-peer** networks

UPCOMING 2023

Pilot and Launch of the **Collaborative Leadership Program**

Advanced data science methods for data and analysis sharing

Online Prototype on the **Use of Privacy Preserving Technologies**

Contributing to the **IASC Operational Guidance** on Data Responsibility in Humanitarian Action

Co-authoring a **Guidance Note on Data Ecosystem Mapping** with the OCHA Centre for Humanitarian Data

Enabling the **effective use** of displacement data in policies and programmes

Improving pathways for data use by **decision-makers** to inform policy and programming on internal displacement

17 Action Plans developed including over 240 participants from the communities, civil society, Government, and international community

Research project on communicating uncertainty and data to decision-makers in displacement contexts

High-level event co-hosted by:



Permanent Mission of Norway
Geneva



FIT FOR THE FUTURE



JIPS BUDGET - STRATEGY 2021-23

| FUNDING REQUIREMENTS VS. SECURED FUNDING | FUNDING REQUIREMENTS | | SECURED FUNDING | GAP |
|---|----------------------|-----------|-----------------|-------|
| | 2021 | 2,115,000 | 2,115,000 | Δ 0 % |
| 2022 | 2,472,000 | 1,999,221 | Δ 20 % | |
| [USD] 2023 | 2,951,932 | 500,000 | Δ 83 % | |

JIPS BUDGET - STRATEGY 2021-23

| SECURED FUNDING BY STRATEGIC GOAL | | GOAL 1 | GOAL 2 | GOAL 3 | GOAL 4 |
|---|-------|------------------|------------------|----------------|----------------|
| | 2021 | 564,696 | 512,834 | 358,806 | 204,674 |
| [USD] | 2022 | 884,529 | 588,133 | 262,310 | 264,250 |
| | 2023 | - | 300,000 | - | 200,000 |
| | TOTAL | 1,449,224 | 1,450,967 | 621,115 | 618,924 |

High-level event co-hosted by:



Permanent Mission of Norway
Geneva



GET IN TOUCH:

Wilhelmina Welsch, Coordinator@jips.org

#DataforSolutions

@JIPS_profiling
www.jips.org

TUESDAY, 14 JUNE 2022 | 13:00 - 15:00 CEST | VIRTUAL

DELIVERING ON THE UPCOMING
UN SECRETARY-GENERAL'S
ACTION AGENDA ON
INTERNAL DISPLACEMENT:

Making the Key Shifts a Reality for Data

High-level event co-hosted by:



Permanent Mission of Norway
Geneva

